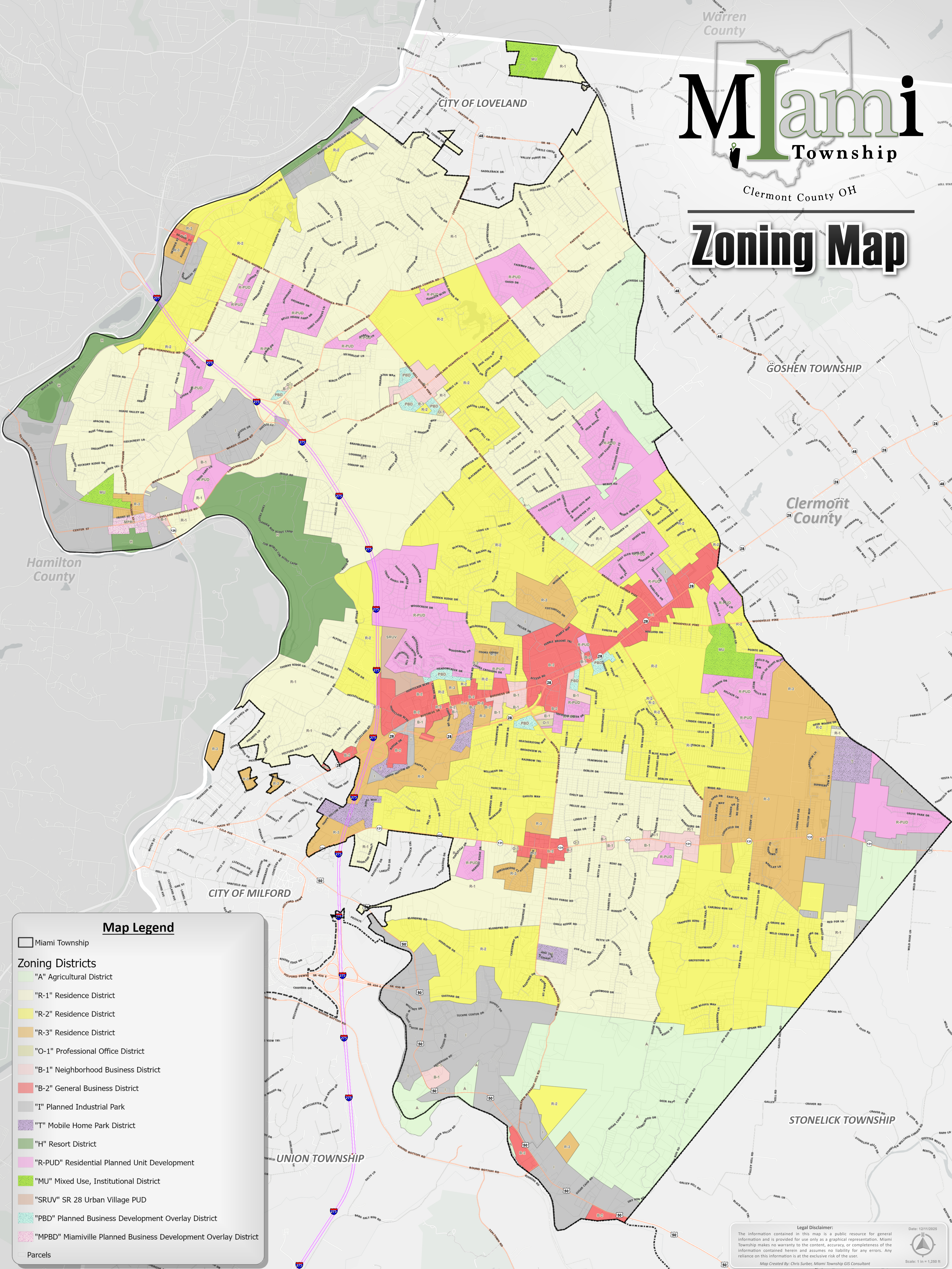


Miami Township

Clermont County OH

Zoning Map



Map Legend

- Miami Township
- Zoning Districts**
- "A" Agricultural District
- "R-1" Residence District
- "R-2" Residence District
- "R-3" Residence District
- "O-1" Professional Office District
- "B-1" Neighborhood Business District
- "B-2" General Business District
- "I" Planned Industrial Park
- "T" Mobile Home Park District
- "H" Resort District
- "R-PUD" Residential Planned Unit Development
- "MU" Mixed Use, Institutional District
- "SRUV" SR 28 Urban Village PUD
- "PBPD" Planned Business Development Overlay District
- "MPBD" Miamiville Planned Business Development Overlay District
- Parcels

Legal Disclaimer:
 The information contained in this map is a public resource for general information and is provided for use only as a graphical representation. Miami Township makes no warranty to the content, accuracy, or completeness of the information contained herein and assumes no liability for any errors. Any reliance on this information is at the exclusive risk of the user.
 Map Created By: Chris Surber, Miami Township GIS Consultant
 Date: 12/11/2025
 Scale: 1 in = 1,250 ft